

Shotcrete Nozzleman Certification

WEC has a crew of certified shotcrete nozzleman with experience in a wide variety of shotcrete applications. To obtain certification, an individual must have at least 500 hours of shotcrete experience, both on the pump and at the nozzle. Certification requires that you pass a written test and a field test. Three of our staff have been certified shotcrete nozzleman for over 5 years.

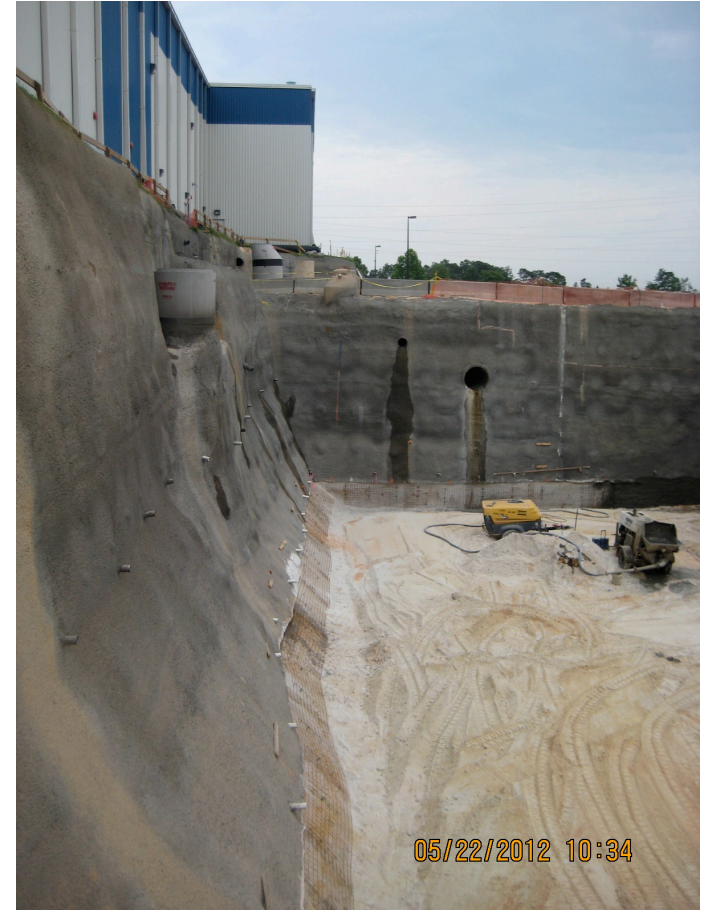
Examples of our work include a large drainage ditch at Plant Vogtle; a shotcrete overlay for the Lake James Spillway and a soil nail wall for a large manufacturing plant addition. [Click here to view test panels being shot during the field test portion of certification.](#)



Vogtle Nuclear Plant



Lake James Spillway



Manufacturing Plant